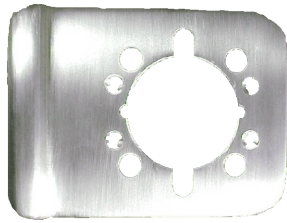
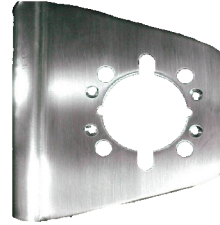




1082 Series Bored Cylinder Latchguard



1082-4



1082-6

General Description:


A simple, aesthetically pleasing latchguard for bored cylinder lock sets required little or no additional installation preparation.

Design Objectives:

1. Protects latchbolts at strike and jamb.
2. Simple installation.
3. Universal to all bored cylindrical locksets.

Features:

1. Easy Installation.
2. Universal to all bored commercial 2-3/4" backset locksets.
3. Two sizes; 4" and 6" standard.
4. Type 316 stainless steel is the most corrosive-resistant grade available.
(All Trimco anti-vandal pulls are type stainless steel).
5. Reusable.
6. Custom versions available for electronic locks.

 **Trimco** 3528 Emery St. Los Angeles, CA 90023
Ph: 323-262-4191 Fax: 800-637-8746
Info: info@trimcobbw.com Web: www.trimcobbw.com