

REVISED 1-3-96

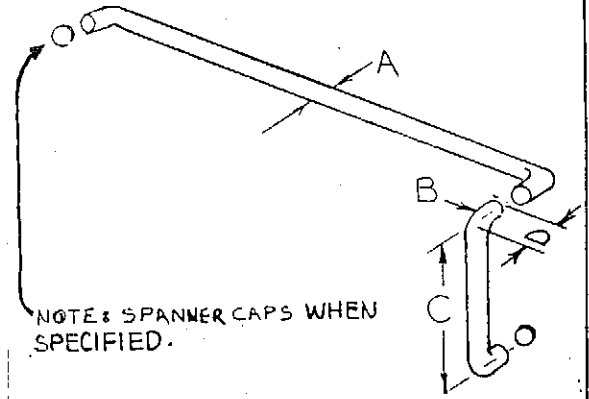
REVISED 9-22-95

REVISED : 8-22-95

REVISED: J-13-87

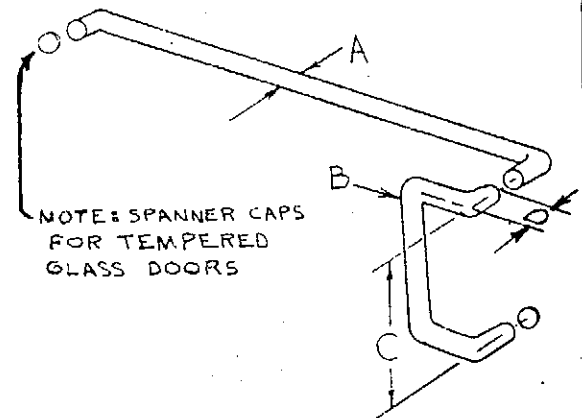
REVISED 1-10-03

| TRIMCO    | A     | B        | C        | D      |
|-----------|-------|----------|----------|--------|
| PUSH/PULL | DIA.  | GRIP P/N | GRIP CTC | PROJ.  |
| 1728      | 3/4   | 1194-2   | 8"       | 2-5/8" |
| 1729      | 3/4   | 1194-3   | 10"      | 2-5/8" |
| 1730      | 3/4   | 1194-4   | 12"      | 2-5/8" |
| 1731      | 1     | 1195-2   | 10"      | 3"     |
| 1732      | 1     | 1195-3   | 12"      | 3"     |
| 1733      | 1     | 1195-6   | 18"      | 3"     |
| 1746      | 1-1/4 | 1743     | 18"      | 3-1/2" |
| 1746-1    | 1-1/4 | 1195-6J  | 12"      | 3-1/2" |



NOTE: PUSH BAR CTC—SPECIFY

| TRIMCO    | A     | B        | C        | D      |
|-----------|-------|----------|----------|--------|
| PUSH/PULL | DIA.  | GRIP P/N | GRIP CTC | PROJ.  |
| 1734      | 3/4   | 1191-1   | 8"       | 3-1/4" |
| 1735      | 3/4   | 1191-2   | 10"      | 3-1/4" |
| 1736      | 3/4   | 1191-12  | 12"      | 3-1/4" |
| 1737      | 1     | 1191-3   | 10"      | 3-1/4" |
| 1738      | 1     | 1191-4   | 12"      | 3-1/4" |
| 1739      | 1     | 1191-5   | 18"      | 3-1/4" |
| 1747      | 1-1/4 | 1744     | 18"      | 3-3/4" |
| 1747-1    | 1-1/4 | 1191-4J  | 12       | 3-3/4" |



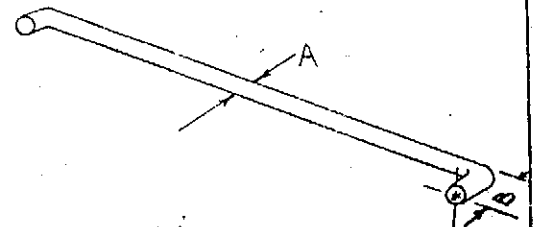
NOTE: PUSH BAR CTC—SPECIFY

**NOTE**

SPECIFY CTC AND DOOR THICKNESS IF OTHER THAN 1-3/4"

| TRIMCO | A      | B      |
|--------|--------|--------|
| PUSH   | DIA.   | PROJ.  |
| 1740   | 3/4    | 3-1/8" |
| 1741   | 1      | 3-1/8" |
| 1745   | 1-1/4" | 3-1/2" |

SEE MOUNTING METHODS FOR MOUNTING ALTERNATIVES



NOTE: CTC—SPECIFY

NOTE: SEE MOUNTING DETAILS

DWG. NO. 11559

**Trimco / BBW**  
 Triangle Brass Manufacturing Company, Inc.  
 3528 Emery Street, P.O. Box 23277  
 Los Angeles, CA 90023, USA

**1700 SERIES**  
 PUSH AND PULL BAR SETS

DR. BY: L. R.

Book No. \_\_\_\_\_ Date Requested: \_\_\_\_\_  
 This template is provided for use only on the job for which it was requested.  
 Trimco reserves the right to make design changes without notice.