

TEMPLATE NO.

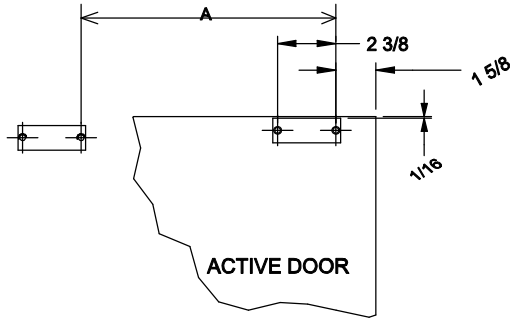
18980  
SHT 1 OF 1



3528 Emery Street  
PO BOX 23277  
Los Angeles, CA 90023-0277  
(323)262-4191 www.trimcobbw.com  
email:info@trimcobbw.com

PRODUCT

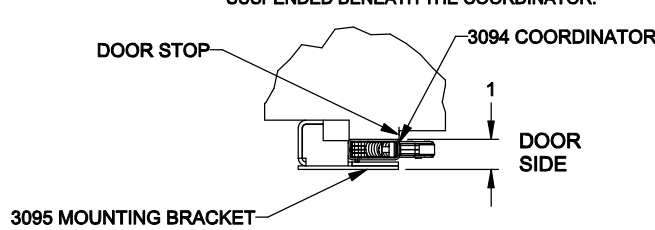
3094 -  
COORDINATOR



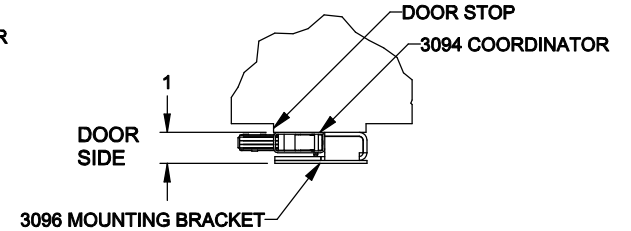
CLOSE DOORS AND LOCATE WEAR PLATES AS SHOWN. 1/16 INCHES FROM TOP OF DOOR, THE FIRST HOLE ON THE ACTIVE DOOR PLATE SHOULD BE 1-5/8 FROM THE DOOR JAM. THE OTHER PLATE ON THE INACTIVE DOOR (THE FIRST HOLE) SHOULD BE LOCATED THE DIMENSION "A" FROM THE FIRST HOLE ON THE FIRST PLATE.

PART NUMBER	OVERALL LENGTH	DIM A
3094A	32	25-1/2
3094B	52	45-1/2
3094C	60	53-1/2

THESE MOUNTING BRACKETS ARE NOT FOR MOUNTING THE COORDINATOR, THEY ARE FOR MOUNTING OTHER DOOR STOP APPLIED HARDWARE WHICH WOULD NOT BE ABLE TO BE MOUNTED DUE TO INTERFERENCE FROM THE COORDINATOR. THE OTHER HARDWARE WOULD MOUNT ON THE BRACKET(S), SUSPENDED BENEATH THE COORDINATOR.

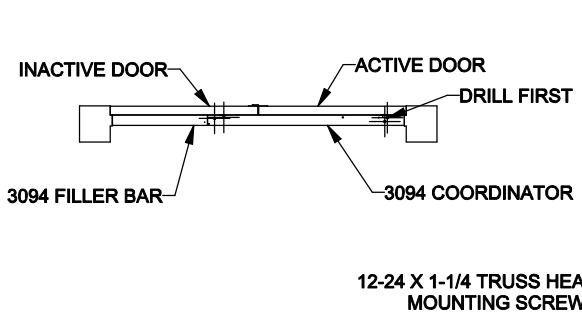


3095 MOUNTING BRACKET FOR STOP SUPPLIED HARDWARE (WHEN SPECIFIED) STOP WIDTH 7/8 TO 2-1/4



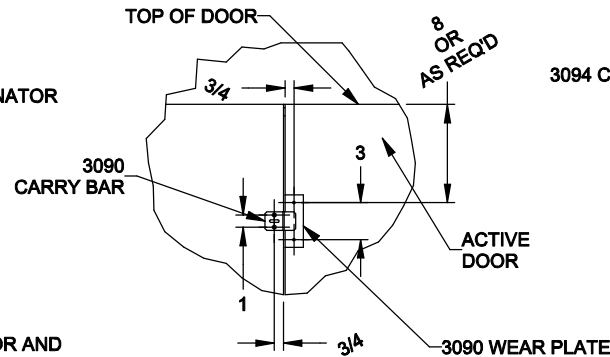
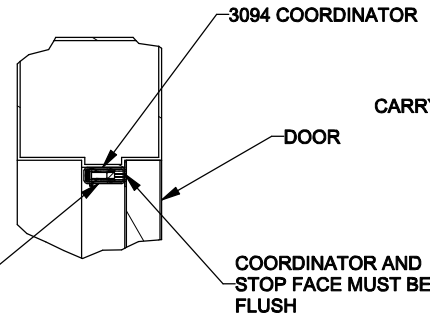
3096 MOUNTING BRACKET FOR STOP APPLIED HARDWARE (WHEN SPECIFIED) STOP WIDTH OVER 2-1/4

INSTALL MOUNTING BRACKETS FOR STOP APPLIED HARDWARE (WHEN SPECIFIED) AS SHOWN ABOVE. 3095 - STOP WIDTH 7/8 TO 2-1/4, 3096 - STOP WIDTH GREATER THAN 2-1/4. LOCATE BRACKET CENTERLINE IN SAME LOCATION AS CENTERLINE OF STOP APPLIED HARDWARE PER MANUFACTURER'S TEMPLATE. FIELD DRILL AND TAP MOUNTING BRACKETS FOR STOP APPLIED HARDWARE ACCORDING TO MANUFACTURER'S TEMPLATE. NOTE: LOWER DOOR APPLIED HARDWARE 1 INCH SO AS TO CLEAR COORDINATOR AND MOUNTING BRACKETS.

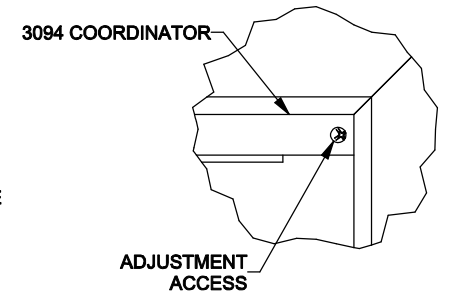


LOCATE 3094 AS SHOWN ABOVE. COORDINATOR SHOULD BE LOCATED SNUGLY IN CORNER OF FRAME WITH FACE OF COORDINATOR FLUSH WITH FACE OF STOP STRIP. LOCATE AND DRILL HOLE MARKED "DRILL FIRST" - USE A #10 DRILL. INSTALL 12-24 SELF TAPPING SCREW TO HOLD COORDINATOR IN PLACE FOR DRILLING REMAINING SCREW HOLES. INSTALL ALL SCREWS.

FILLER BAR SHOULD BE CUT TO SIZE TO FILL REMAINING OPENING - DRILL MOUNTING HOLES WHERE APPROPRIATE.



3090 CARRY BAR INSTALLATION. INSTALL AS SHOWN, PRIOR TO FINAL MOUNTING OF CARRY BAR, ADJUST FOR PROPER FUNCTIONING. MOUNT WITH SUPPLIED HARDWARE.



ADJUST TO DESIRED SETTINGS. USING A PHILLIPS HEAD SCREWDRIVER TURN CLOCKWISE TO INCREASE OVERRIDE FORCE.

NOTE: This template is provided for use only on the job for which it was requested. Trimco reserves the right to make design changes without notice. Trimco will not be responsible for errors or damage caused by the use of out-of-date templates.

DATE

10/28/08