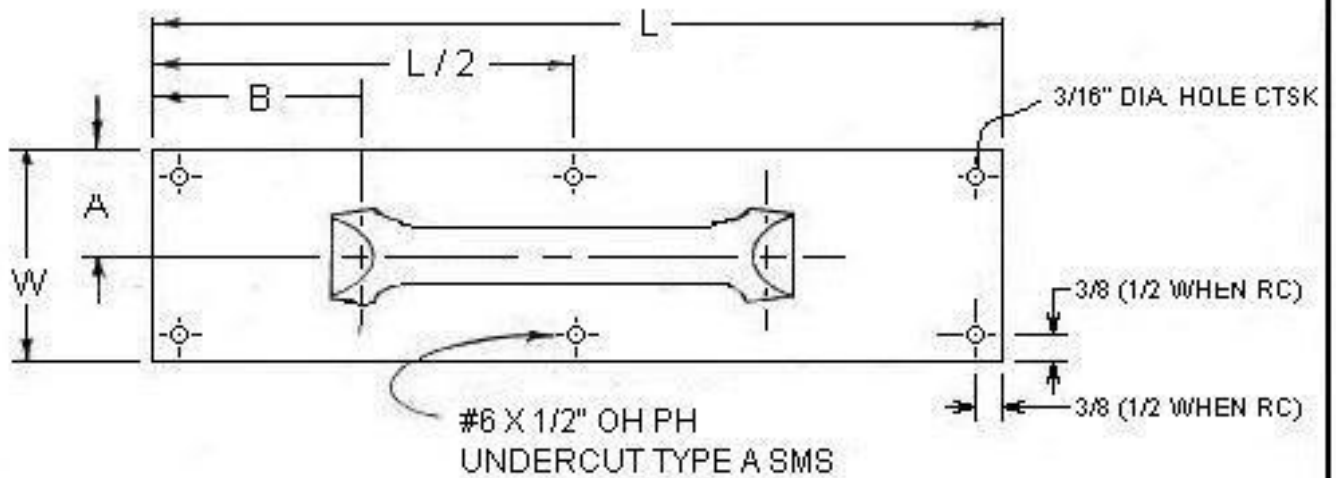


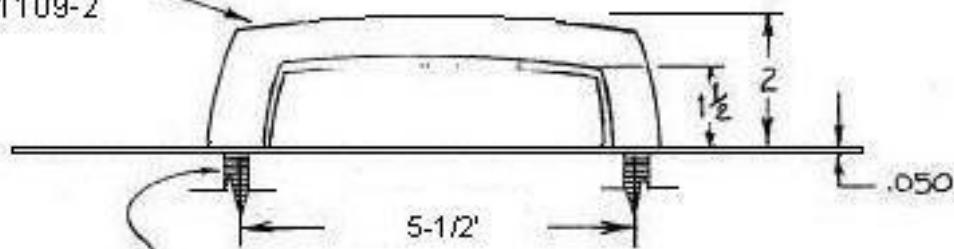
REVISED: 3 - 21 - 95

REVISED: 12 - 18 - 86

REVISED: 8-24-05 WMK



GRIP: 1012; 1109-1
1012-B: 1109-2



1/4-20 X 2-1/4" T.B.
X #14 WASHER

NOTE: DO NOT PRE-DRILL DOOR

PULL PLATE	PUSH PLATE	W	L	A	1012
					B
1012-1	1001-1	3	12	1-1/2	3-1/4
1012-2	1001-2	3-1/2	15	1-3/4	4-3/4
1012-3	1001-3	4	16	2	5-1/4

DWG. NO. 11508

Trimco / **BBW**
Triangle Brass Manufacturing Company, Inc.
3528 Emery Street, P.O. Box 23277
Los Angeles, CA 90023, USA

1012
PULL PLATE

DR. BY: L. R.

TRIMCO RESERVES THE RIGHT TO
MAKE DESIGN CHANGES WITHOUT
NOTICE.