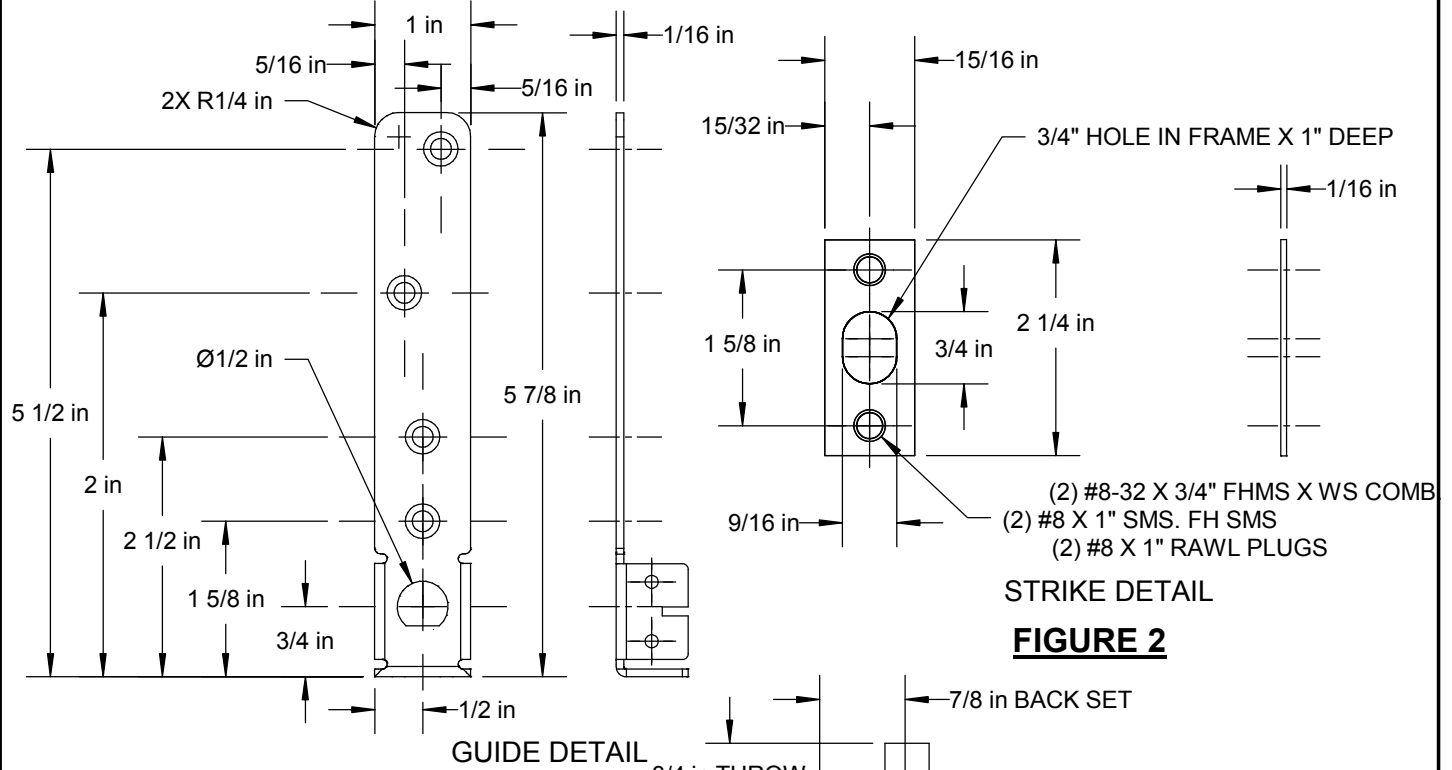


NOTE
DIMENSIONS SHOWN ARE FOR TOP FLUSHBOLT. FOR BOTTOM FLUSHBOLT INVERT AND MEASURE FROM BOTTOM EDGE OF DOOR. USE TRIMCO 3910 OR 3911 DUST PROOF STRIKE WITH BOTTOM BOLT.
* MINIMUM CLEARANCE REQUIRED

FIGURE 1

NOTE: This template is provided for use only on the job for which it was requested. Trimco reserves the right to make design changes without notice. Trimco will not be responsible for errors or damage caused by the use of out-of-date templates.

DATE
02/13/06



STRIKE DETAIL

FIGURE 2

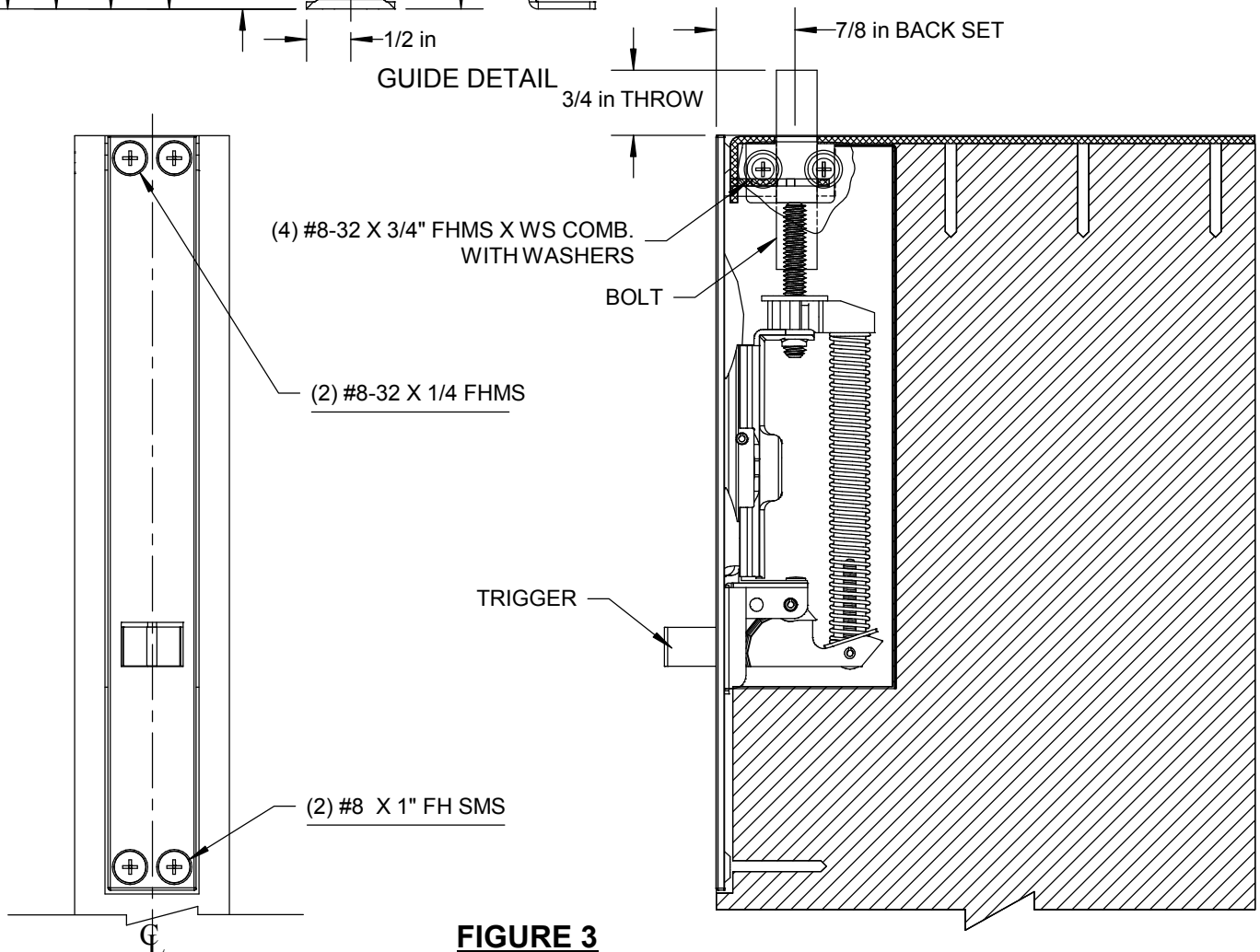


FIGURE 3

NOTE: This template is provided for use only on the job for which it was requested. Trimco reserves the right to make design changes without notice. Trimco will not be responsible for errors or damage caused by the use of out-of-date templates.

DATE

02/13/06

TEMPLATE NO.

17224
SHT 3 OF 3



3528 Emery Street
PO Box 23277
Los Angeles, CA 90023-0277
(323) 262-4191
www.trimcobbw.com

PRODUCT

3815 L
UL WOOD DOOR AUTO FLUSHBOLT

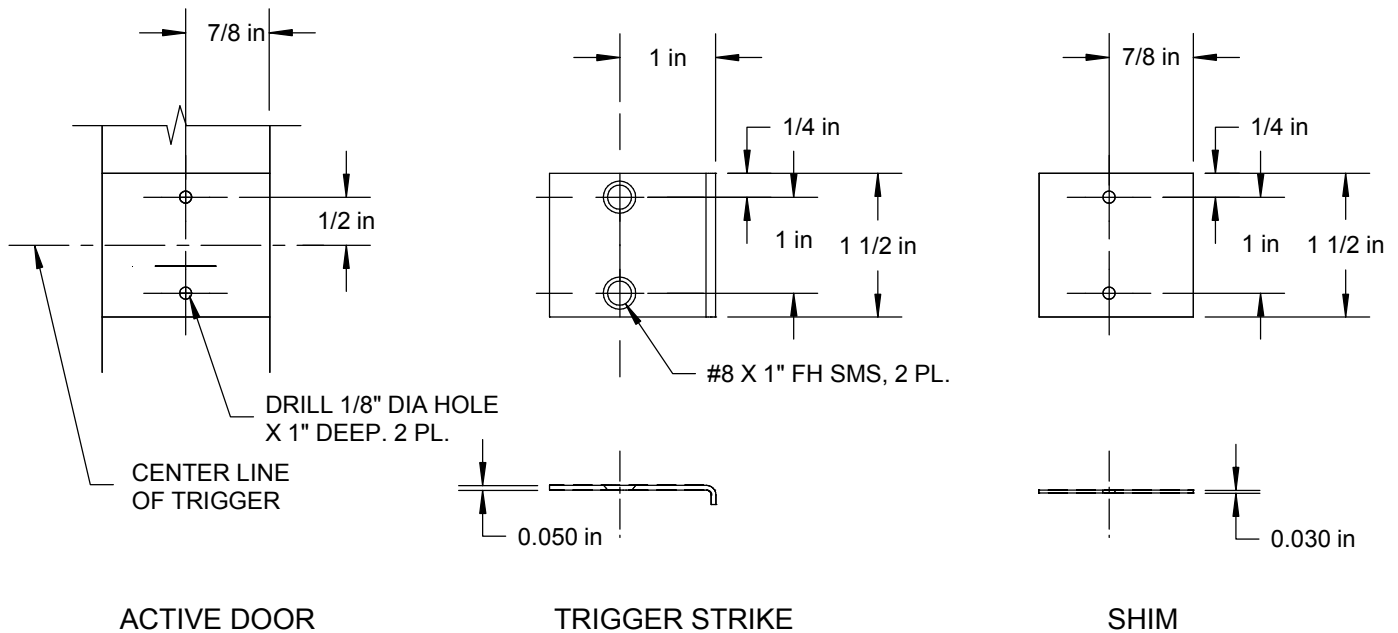


FIGURE 4

INSTALLATION INSTRUCTIONS

1. PREPARE INACTIVE DOOR AS SHOWN IN FIGURE 1. SEAL DOOR IMMEDIATELY.
2. PREPARE FRAME FOR ANSI A115.4 STRIKE AS IN FIGURE 2. LOCATE STRIKE TO LINE UP WITH BOLT.
3. INSTALL TRIMCO 3910 OR 3911 DUST PROOF STRIKE IN FLOOR (TEMPLATE AVAILABLE), OR ANSI A115.4 STRIKE SHOWN IN FIGURE 2. LOCATE STRIKE TO LINE UP WITH BOLT. INSTALL STRIKE.
4. INSTALL TRIMCO 3815 L AS SHOWN IN FIGURE 3.
5. HANG DOOR.
6. ADJUST BOLT SO WHEN FULLY RETRACTED, PROVIDES 1/8" CLEARANCE BETWEEN BOLT AND STRIKE. TO ADJUST BOLT, REMOVE SCREWS UNDERLINED IN FIGURE 3. AND REMOVE BOLT. ROTATE BOLT UP OR DOWN AS REQUIRED, THEN REPLACE BOLT.
7. PREPARE ACTIVE DOOR AS SHOWN IN FIGURE 4. TRIGGER STRIKE TO LINE UP WITH CENTER LINE OF TRIGGER AS SHOWN IN FIGURE 4. INSTALL STRIKE USING (2) #8 X 1" SMS. SHIM AS REQUIRED TO PROVIDE 3/32" CLEARANCE BETWEEN INACTIVE DOOR AND TRIGGER STRIKE.

NOTE: This template is provided for use only on the job for which it was requested. Trimco reserves the right to make design changes without notice. Trimco will not be responsible for errors or damage caused by the use of out-of-date templates.

DATE

02/13/06